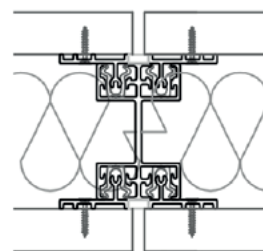


MODULAR SOLID WALL

J'Solid's versatile structure allows for a **wide range of finishings** for the Solid version, as well as several **modulation schemes**, making it a perfect solution for **dynamic spaces**.

The **acoustic performance** of our J'SOLID Partition, can be worked in order to fit the most demanding projects.



TECHNICAL SPECIFICATONS

| Basic information | |
|---|---|
| Use | Non-bearing interior partition walls |
| Module connection | with Jansen Wall Solutions clip and fix system |
| Ceiling connection | The existing structure of the ceiling or suspended ceiling |
| Structure | 19mm MDF/Chipboard panels |
| Acoustic performance | |
| Depending on the inside rock wool density | 46 to 53 dB Rw |
| Standard dimensions of the module | |
| Wall Thickness | 108 mm |
| Panel thickness | 19mm |
| Profile Dimensions | 30 mm |
| Tolerance | 10 to 20mm |
| Modulation (length) | between 200 and 1200mm. Other lenghts possible upon consultation |
| Modulation (height) | up to 3500mm for 46 dB version up to 2800mm for 53 dB version |
| Door options | |
| J'Swing Solid Door 50mm | |
| J'Swing Single Glass Door 10mm | |
| J'Swing Double Glazed Door 50mm | |
| J'Swing Single Glazed Door | |
| J'Swing Glass Skin Door | |

